



KAMI NOTES

- What is Kami? (Slide #2)
- How to add Kami Extension? (Slide #3)
- Where to find Guided Notes? (Slide #4)
- How to edit, save, and upload? Or split screen?

(Edit - Slide #10)(Save - Slide #14)(Upload - Slide #15)

What is? **Kami**

★Kami works as long as you "allow" permissions★

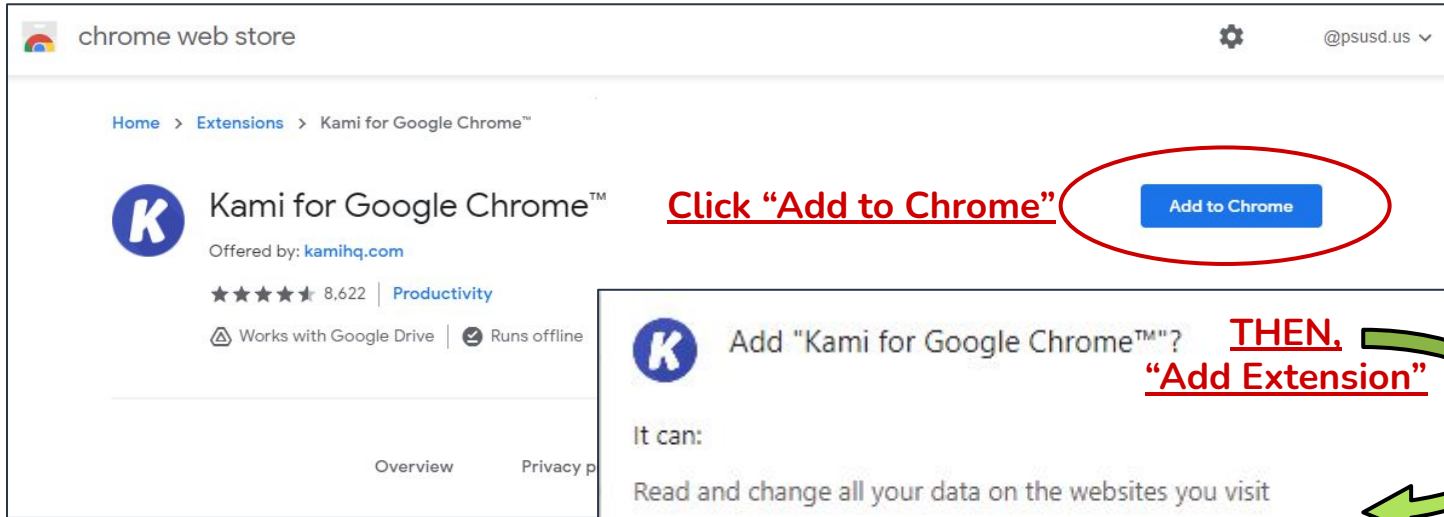
★Kami allows you to edit documents even PDF Files★

Every student can access Kami while logged into their District device using their District account (13150...@psusd.us)

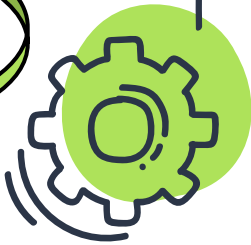
ADDING KAMI EXTENSION

If you added the extension skip to slide #4 to find notes.

- Open a tab & go to chrome web Store or [click here](#)

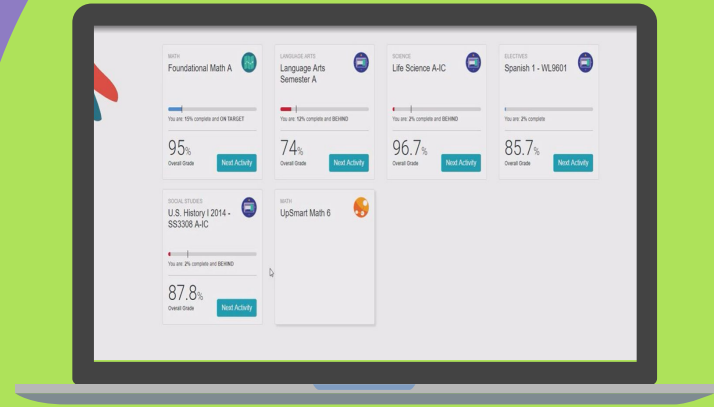


The screenshot shows the Chrome Web Store page for the 'Kami for Google Chrome' extension. The page includes the extension's logo (a blue circle with a white 'K'), its name, and the developer 'kamihq.com'. It also displays a 5-star rating with 8,622 reviews and the category 'Productivity'. A blue 'Add to Chrome' button is circled in red. A red arrow points from the text 'Click "Add to Chrome"' to this button. Below the main page, a smaller inset shows the confirmation dialog box with the text 'Add "Kami for Google Chrome™"? THEN, "Add Extension"', 'It can: Read and change all your data on the websites you visit', and two buttons: 'Add extension' (circled in red) and 'Cancel'. A red arrow points from the text 'THEN, "Add Extension"' to the 'Add extension' button.



WHERE TO FIND GUIDED NOTES?

Go to Edgenuity & Login



WHERE TO FIND GUIDED NOTES? (CONTINUED)

Click on Math

Open Course Map

2021-2022 CA-Common Core Math 2 S1 w/AL EKs

Hello. [Battery] [Signal] [Wi-Fi] [Mail]

Course Map

- Lesson 2 Adding and Subtracting Polynomials

• Q1 Topics Math 2 S1

- Lesson 1 Operations on Rational and Irrational Numbers
- Lesson 2 Adding and Subtracting Polynomials
- Lesson 3 Multiplying Polynomials and Simplifying Expressions
- Lesson 4 Factoring Polynomials: GCF
- Lesson 5 Factoring Polynomials: Double Grouping
- Lesson 6 Factoring Trinomials: $a = 1$
- Lesson 7 Complex Numbers
- Lesson 8 Operations with Complex Numbers
- Lesson 9 Solving Quadratic Equations:

Date	Activity	Est. Time
AUG 09	Warm-Up Get ready for the lesson.	4m
AUG 10	Instruction How is adding and subtracting polynomials like adding and subtracting numbers?	25m
AUG 10	Summary Review and connect what you learned.	2m

• Click on the Purple bar of the Lesson OR the "+" Symbol.



WHERE TO FIND GUIDED NOTES? (CONTINUED)

A drop down will appear

Click Guided Notes

2021-2022 CA-Common Core Math 2 S1 w/ALEKS

Hello, David

You have 4 overdue activities. These activities will take about 1h 6m to complete.

Course Map

Lesson 2 Adding and Subtracting Polynomials

Lesson Time: 2h 21m Activities: 5

Objectives Standards Transcripts

1. Add and subtract polynomials, determining the degree and number of terms of the sum or difference.
2. Find and evaluate polynomial sums or differences that model real-world situations.

View Guided Notes

Q1 Topics Math 2

- Lesson 1 Operations on Rational and Irrational Numbers
- Lesson 2 Adding and Subtracting Polynomials
- Lesson 3 Multiplying Polynomials and Simplifying Expressions
- Lesson 4 Factoring Polynomials: GCF
- Lesson 5 Factoring Polynomials: Double Grouping
- Lesson 6 Factoring Trinomials: $a = 1$
- Lesson 7 Complex Numbers
- Lesson 8 Operations with Complex Numbers



with Kami Extension a Purple Boxed "K" will appear

lessondocs.edgenuity.com/c6faab00-3299-11e3-931d-bc764e043e0c/guided-notes/student/698D2232F81453BAA6109DD867FB750F/3109-01-01-QuantitativeReasoning-GN-SE.pdf

PowerPoint Presentation 1 / 10 100%

Edgenuity

Warm-Up | Quantitative Reasoning

Lesson Question

Lesson Goals

Interpret the between two quantities.

Determine appropriate graphs to represent relationships.

Determine the quantitative relationships represented by and tables.

Words to Know

K Open with Kami



Edgenuity

Warm-Up | Quantitative Reasoning



Lesson Question



Lesson Goals

Interpret the between two quantities.

Determine appropriate graphs to represent relationships.

Determine the quantitative relationships represented by and tables.



Words to Know

Write the letter of the definition next to the matching word as you work through the lesson. You may use the glossary to help you.

- compare A. an imagined or projected sequence of events
- scenario B. measurable attribute of a thing or event
- constant C. a number or a variable whose value does not change
- quantity D. to explain or show the similarities or differences between items or ideas

NEED HELP TO EDIT, SAVE, OR UPLOAD?

GO TO THE NEXT SLIDE.

DOES THIS APPEAR ON YOUR SCREEN?

CONGRATS! YOU ARE NOW ABLE TO START ANNOTATING YOUR NOTES!

EDIT

Need help editing your notes? Or splitting your screen for easy editing?

SAVE

Need to save the most recent changes?

UPLOAD

Ready to upload your notes?

EDIT

Before you start make sure to add your name to your notes
&
To the tile name by clicking on the file name.

The screenshot shows the Kami software interface. At the top, a blue header bar contains the text "Kami Teacher Edu" followed by a search icon and a file name "3109-01-01-QuantitativeReasoning-GN-SE.pdf" which is circled in red. Below the header, the main content area displays "Edgenuity" and "Warm-Up | Quantitative Reasoning" with a red label "First & last name" next to it. There are two input fields: "Lesson Question" and "Lesson Goals". A red arrow points from the text above to the file name, and another red arrow points from the text above to the "First & last name" label.



EDITING WITH A SPLIT SCREEN?

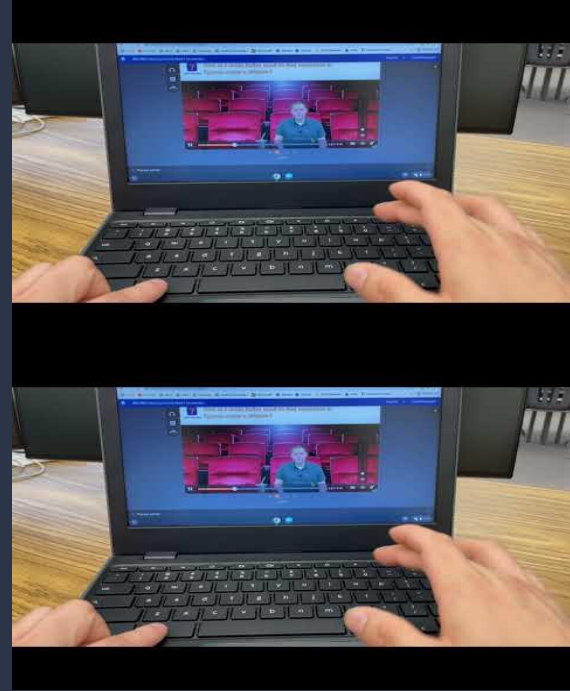
This allows you to watch a lesson and annotate notes at the same time.

1. Have Edgenuity Lesson & Guided Notes on separate windows (max/full screen).

2. Press ALT &] at the same time or ALT & [



depends if you want your notes on left or right side of screen



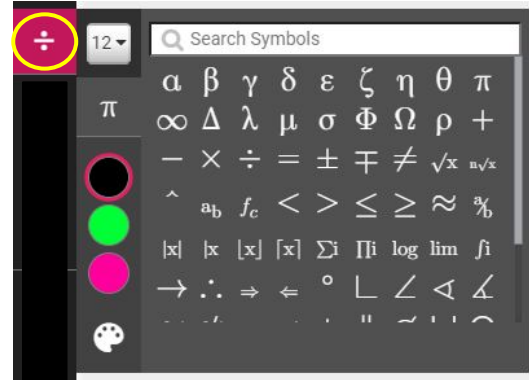
EDIT

Most common tools for Math are Text, Math Symbols, & Drawing.

The "T" lets you add text. Change font, size, & color.

Brush lets you free hand write.

The "division" sign lets you write different math signs like an exponent.



EDIT

Delete something by hovering over the item you wish to delete.

Warm-Up

Quantitative Reasoning

JR



Lesson
Question

What is Quantitative Reasoning?

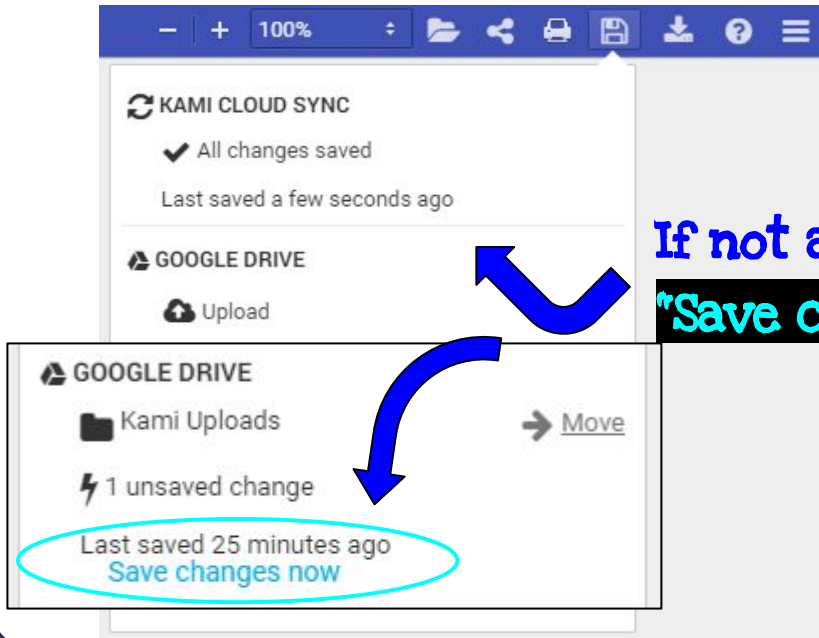


SAVE - SAVE THE MOST RECENT CHANGES

Kami will mostly save changes automatically.

If not a **bright blue** text/button appears
"Save changes now"

Done editing? Ready to
submit? Click on the next
slide for these steps.

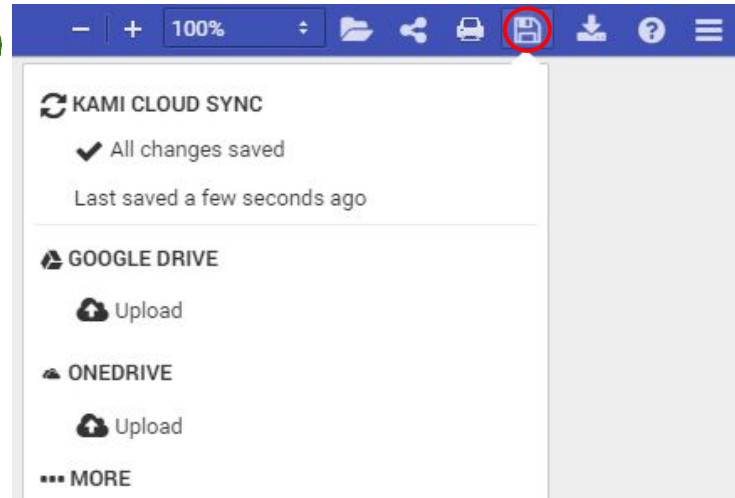
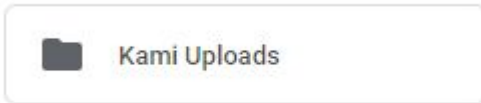


UPLOAD - BEST PRACTICES FOR UPLOADING

Hit the save button. Make sure most recent changes were recorded.

Upload to Google Drive (if first time)
or "Kami Uploads" folder.

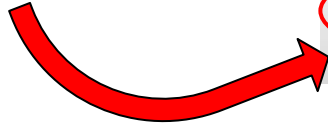
A "Kami Uploads" folder will be
created on your Google Drive (if
first time).



UPLOAD - HOW TO UPLOAD ON EDGENUITY

Ready to upload your saved Guided Notes to Edgenuity?

Log into Edgenuity go
to Guided Notes Section.



AUG 10	Summary	Review and connect what you learned.	Est. Time: 2m
AUG 12	Guided Notes Check Lesson 2 (20 % of grade)	Please use Kami to take notes. Open the lesson pdf in google drive with Kami and edit the pdf while listening to the lecture/instruction. Please submit pdf of your completed Guided Notes (Using Kami) Notes are 20% of your grade.	Est. Time: 1h 30m

Add File - Find your
Guided Notes
&
Submit

Instructions
Click the links to open the resources below. These resources will help you complete the assignment. Once you have created your file(s) and are ready to upload your assignment, click the Add Files button below and select each file from your desktop or network folder. Upload each file separately.

Your work will not be submitted to your teacher until you click Submit.

Documents

File Upload
Accepted file types: .ppt, .pptx, .xls, .xlsx, .doc, .docx, .zip, .pdf, .accdb, .msg

Add Files **Delete All**

Save and Exit **Submit**



THANKS!

